



*Soccer Association for Youth, USA*

# **SAY Referee Training Syllabus**

## **Referee Mechanics**



Copyright SAY 2001

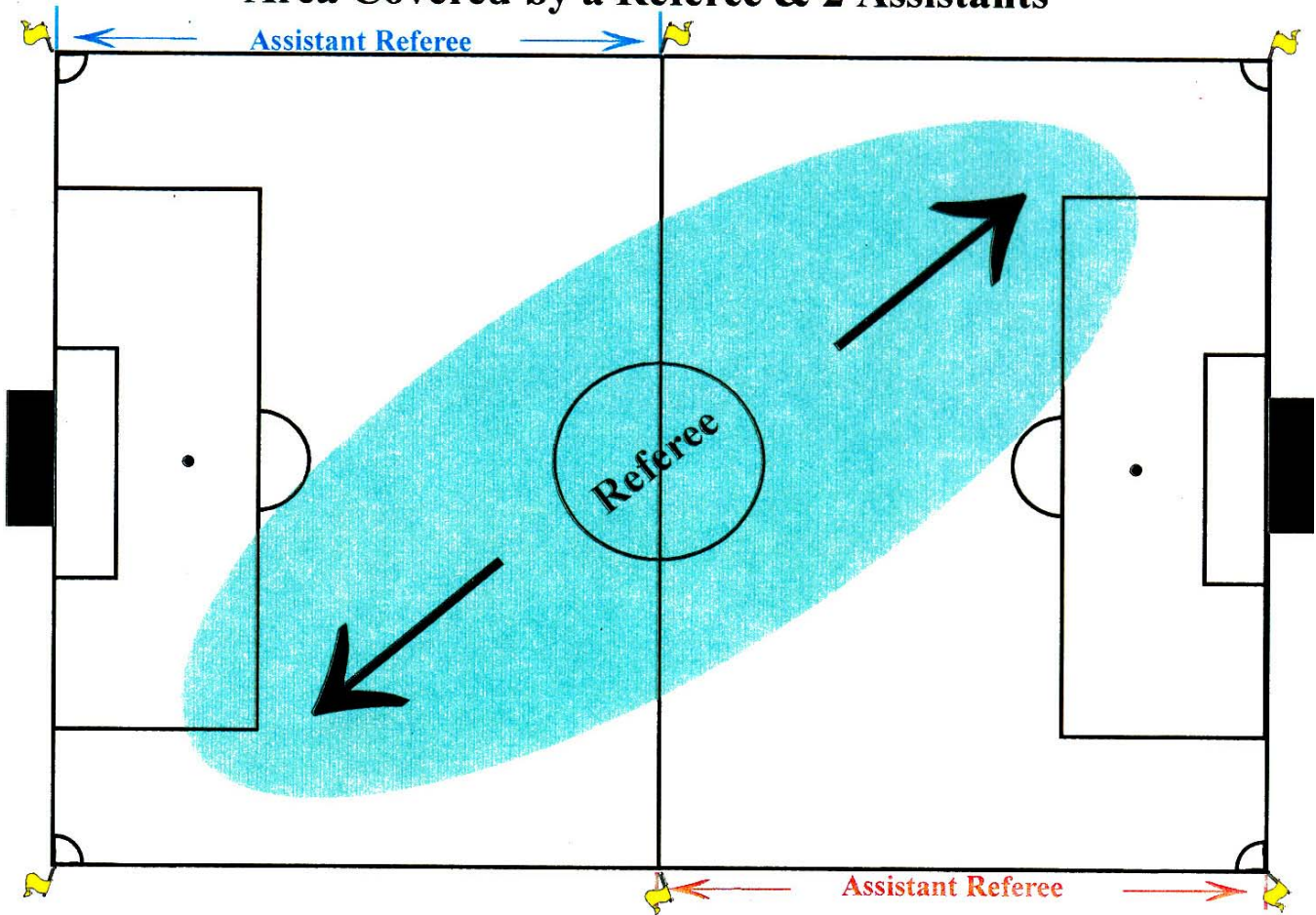
Updated 8/2008

Written By: The SAY National Rules & Referees Committee  
Charles Keaney, Director of Officials

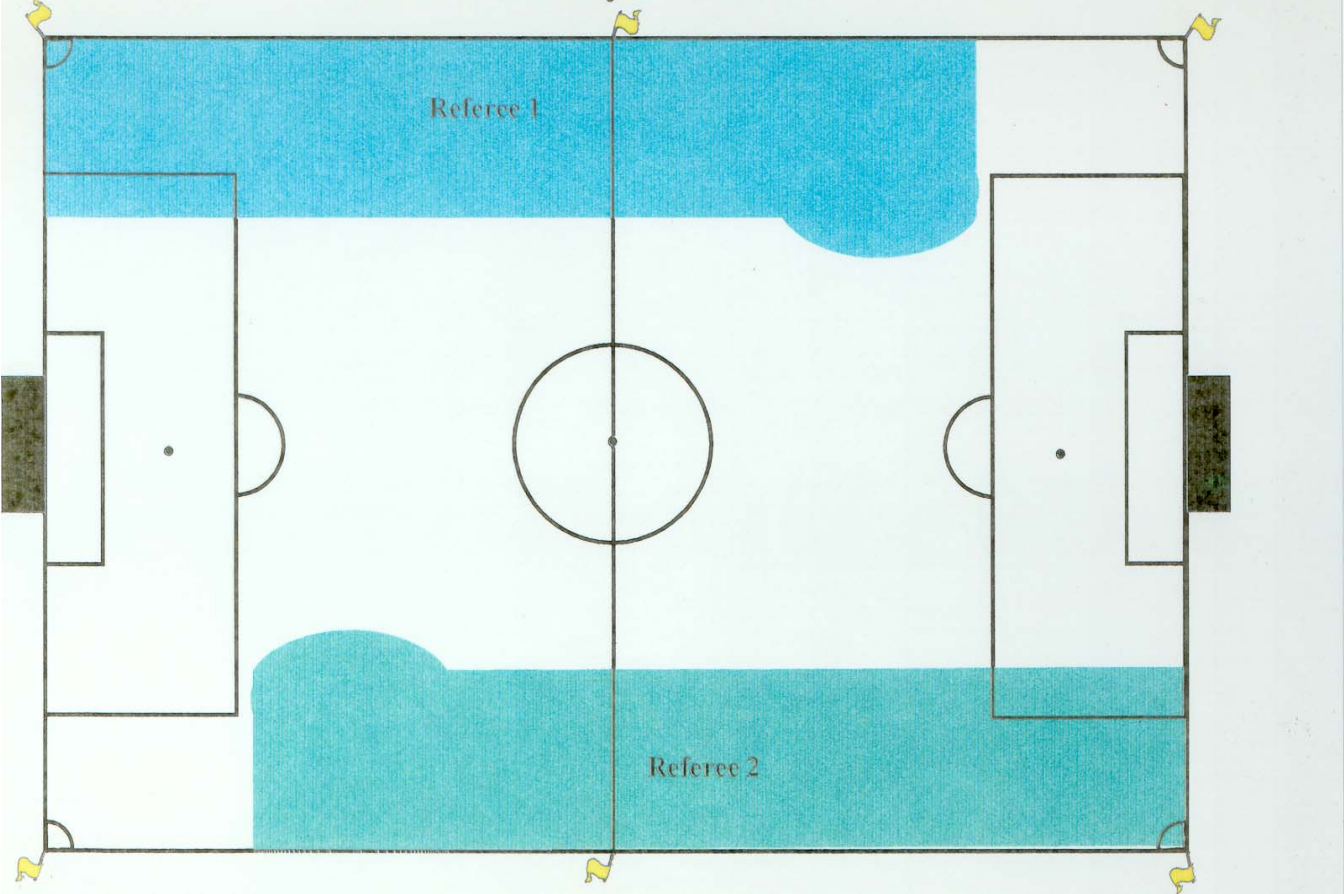
# Referee Mechanics



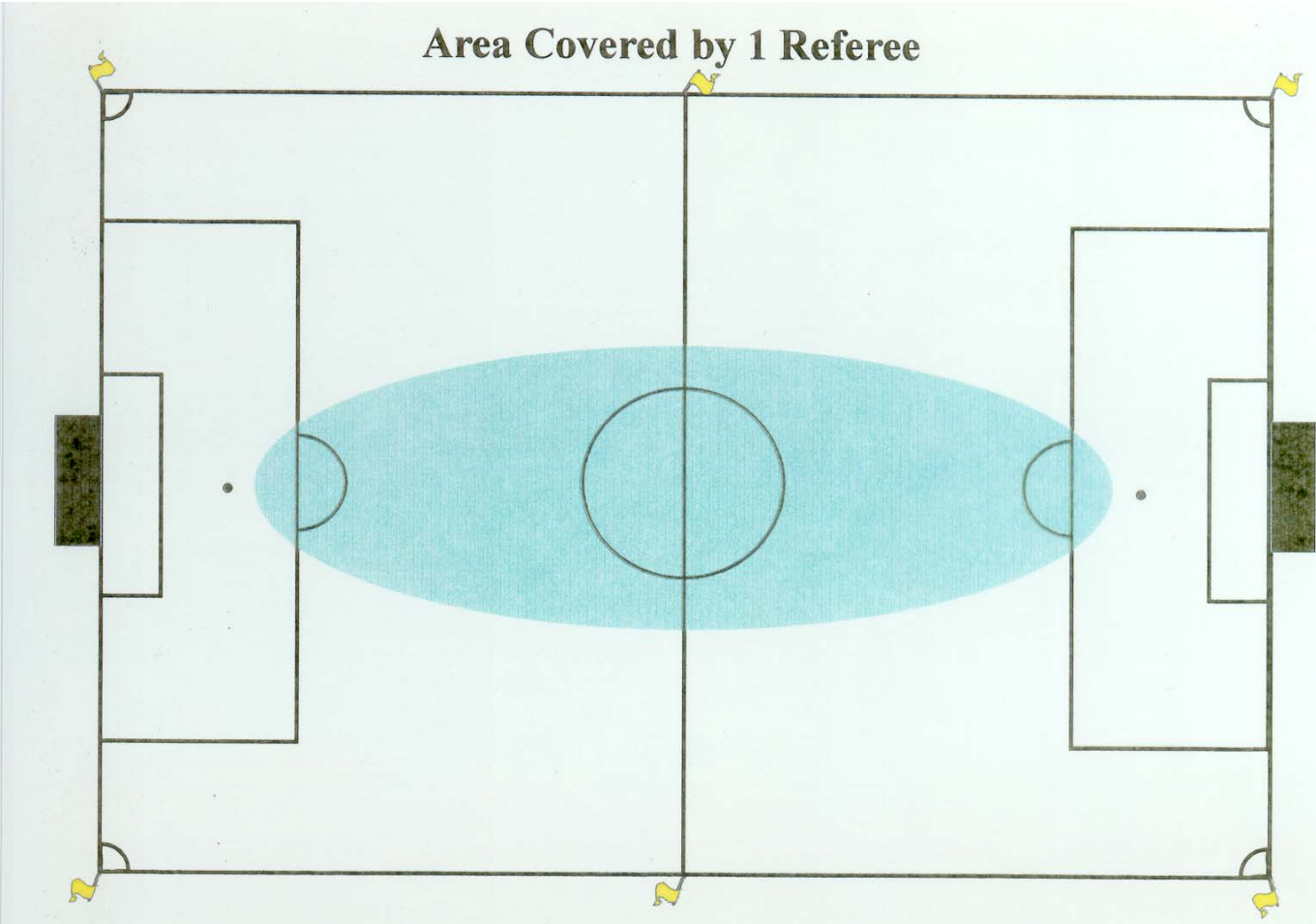
## Area Covered by a Referee & 2 Assistants



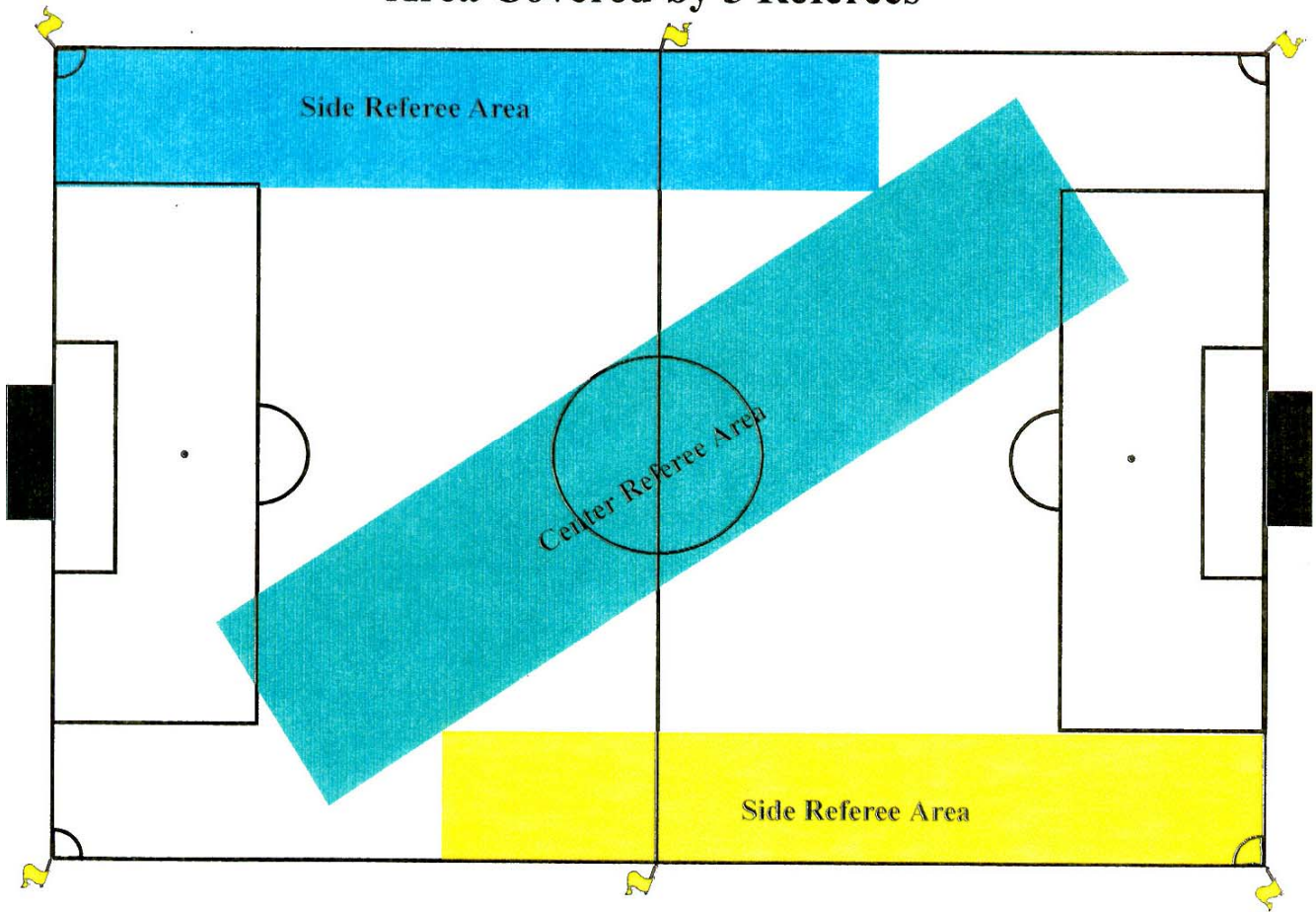
# Area Covered by 2 Referees



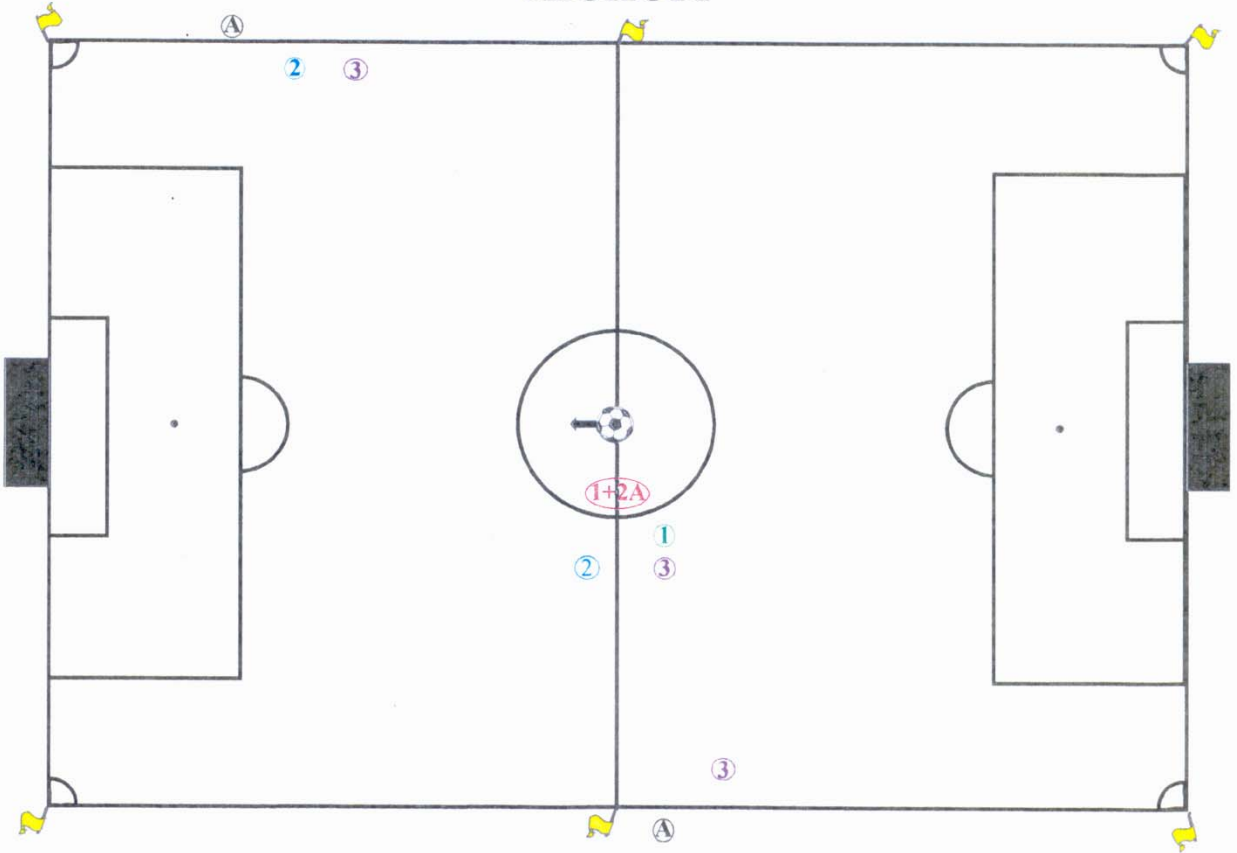
**Area Covered by 1 Referee**



## Area Covered by 3 Referees

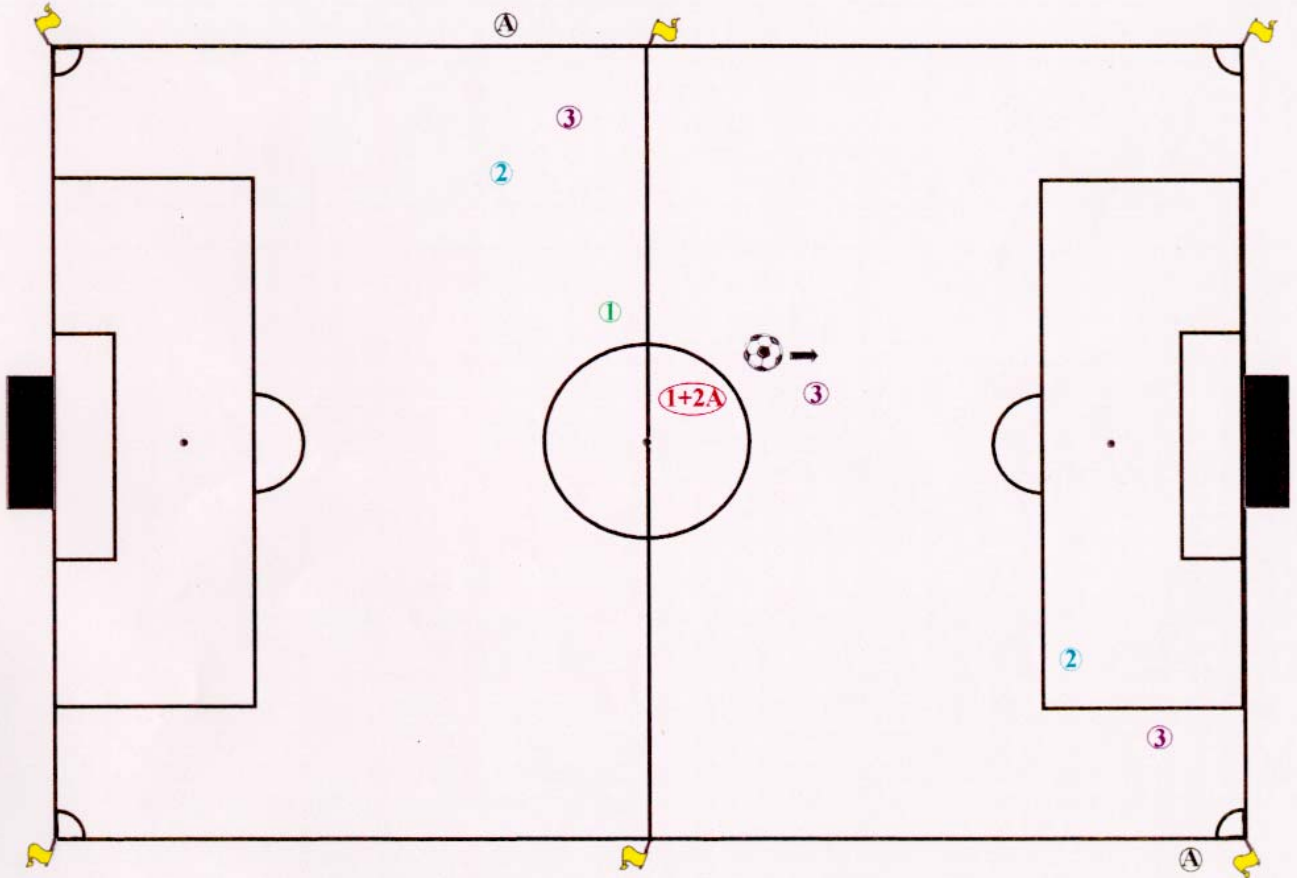


# KICKOFF



① = 1 Referee   ② = 2 Referees   ③ = 3 Referees   (1+2A) = 1 Referee & 2 Assistant Referees

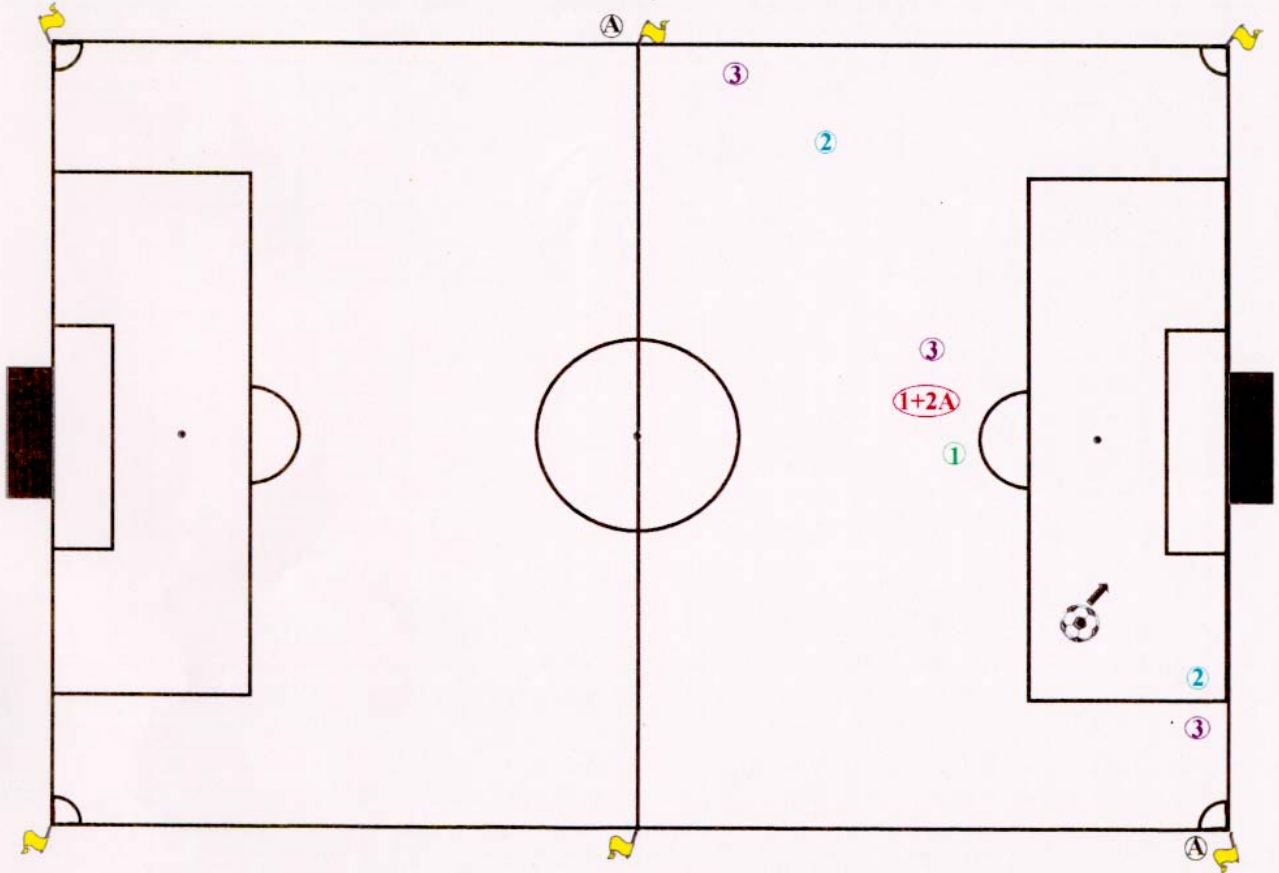
# BALL IN PLAY



① = 1 Referee   ② = 2 Referees   ③ = 3 Referees   (1+2A) = 1 Referee & 2 Assistant Referees

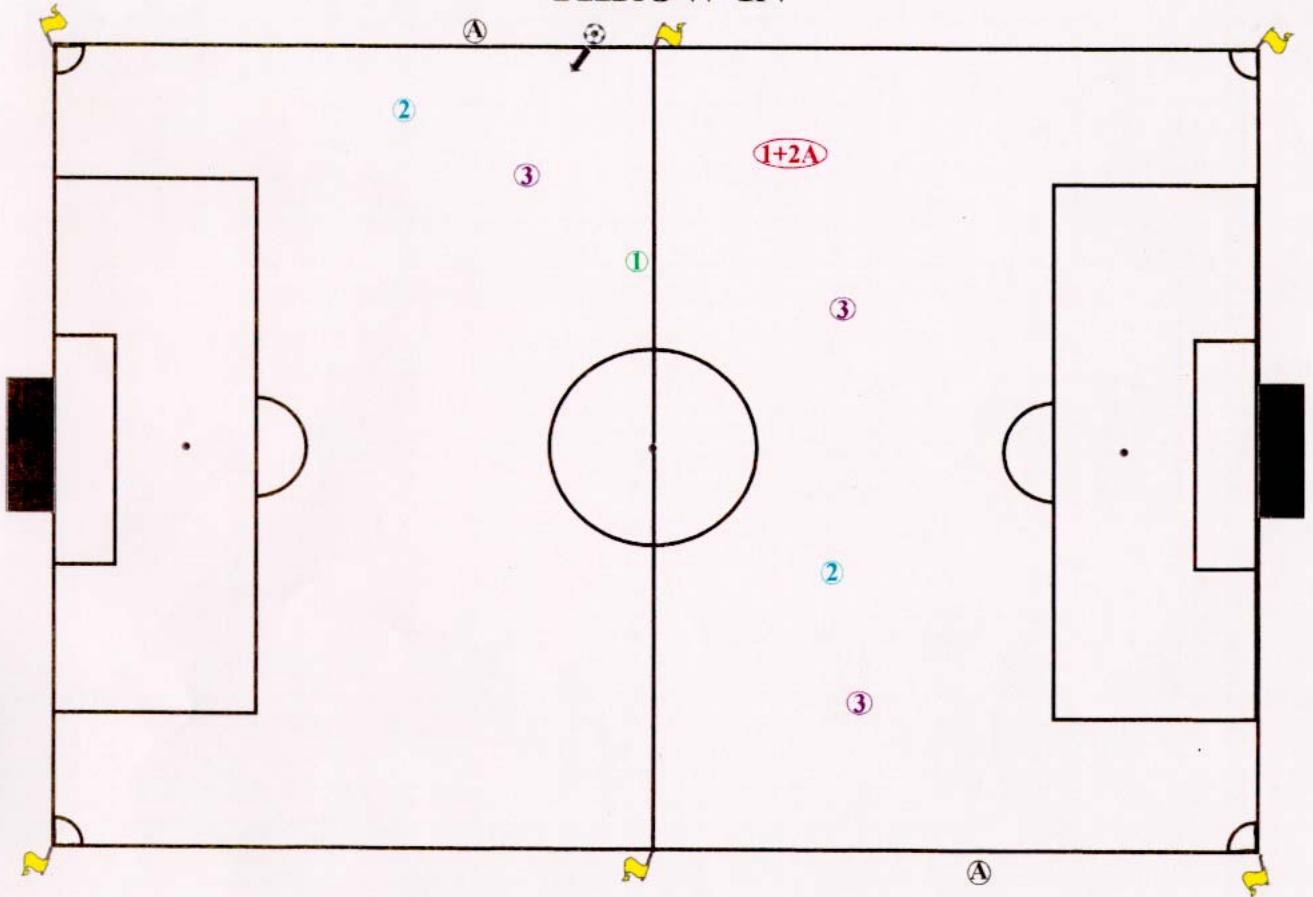


## BALL IN PLAY, NEAR GOAL



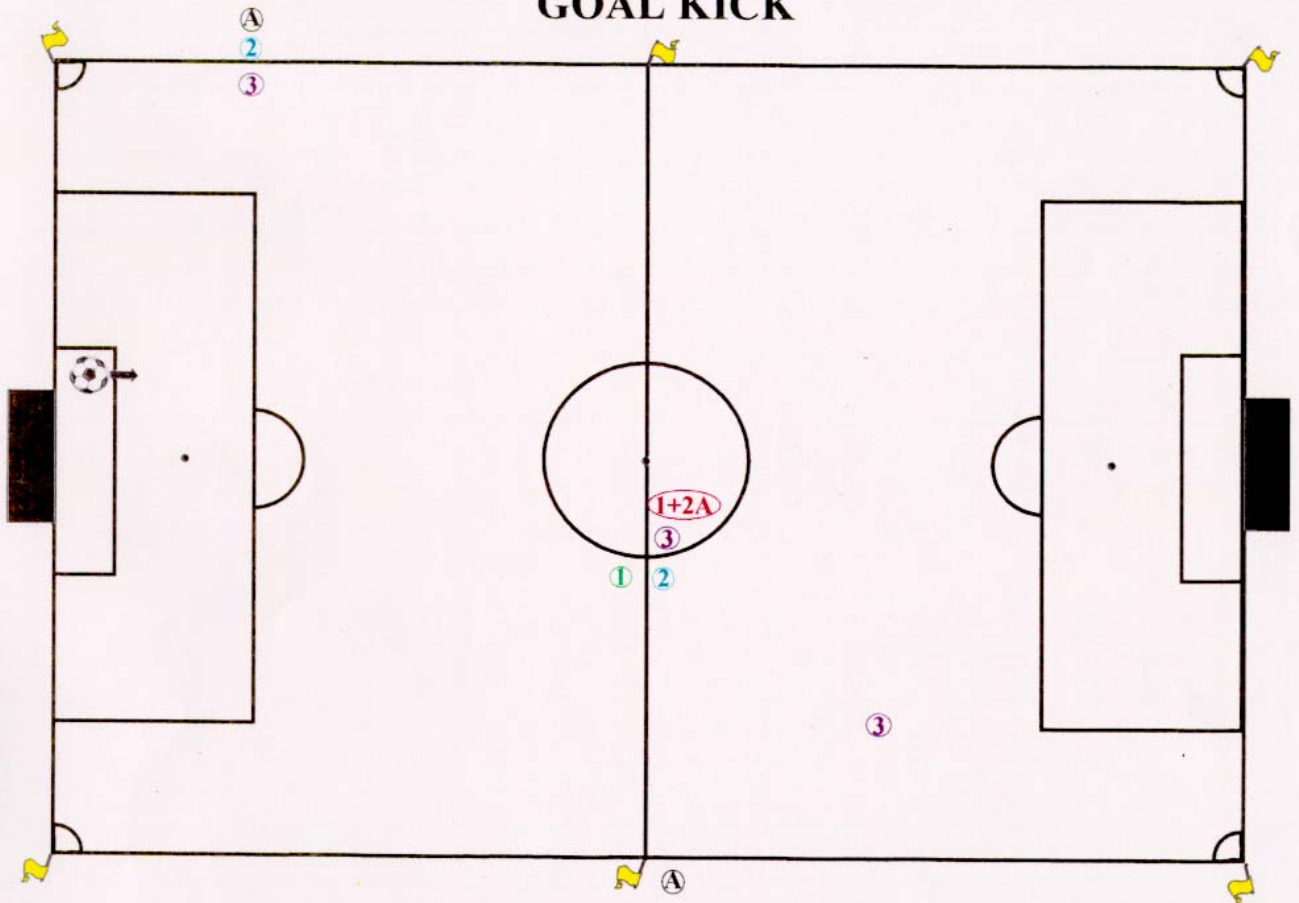
① = 1 Referee    ② = 2 Referees    ③ = 3 Referees    (1+2A) = 1 Referee & 2 Assistant Referees

# THROW-IN



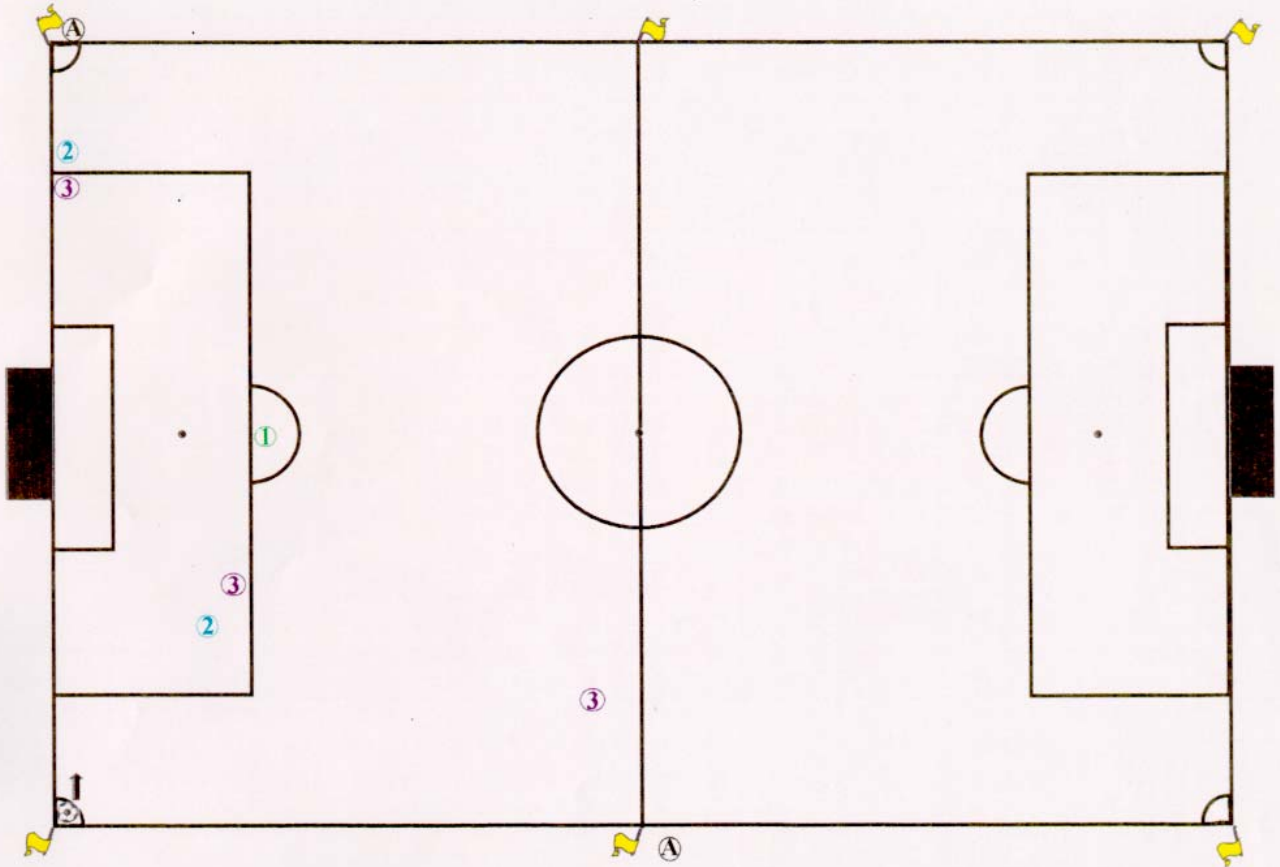
① = 1 Referee   ② = 2 Referees   ③ = 3 Referees   ①+2A = 1 Referee & 2 Assistant Referees

# GOAL KICK



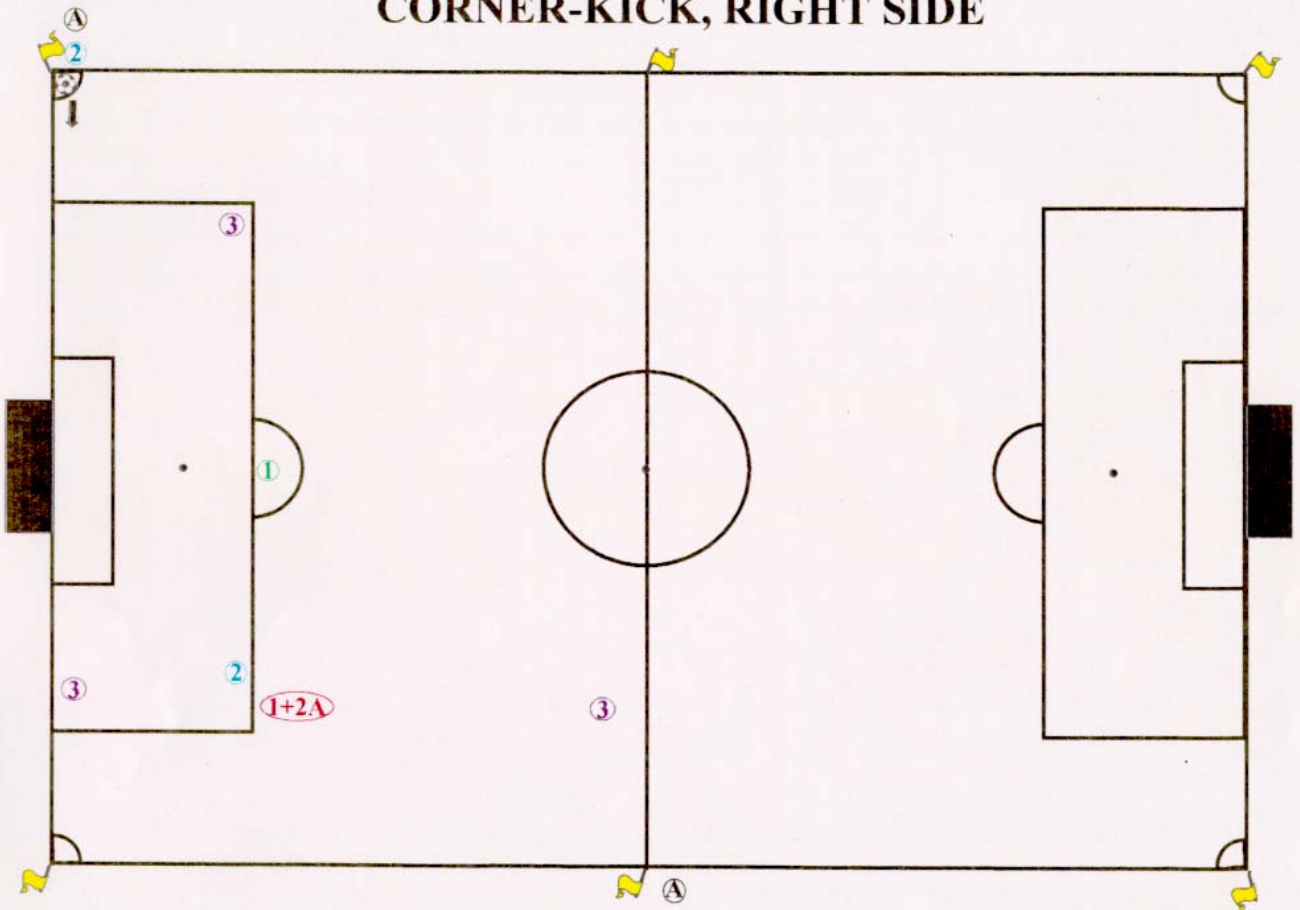
① = 1 Referee    ② = 2 Referees    ③ = 3 Referees    ①+2A = 1 Referee & 2 Assistant Referees

## CORNER-KICK, LEFT SIDE



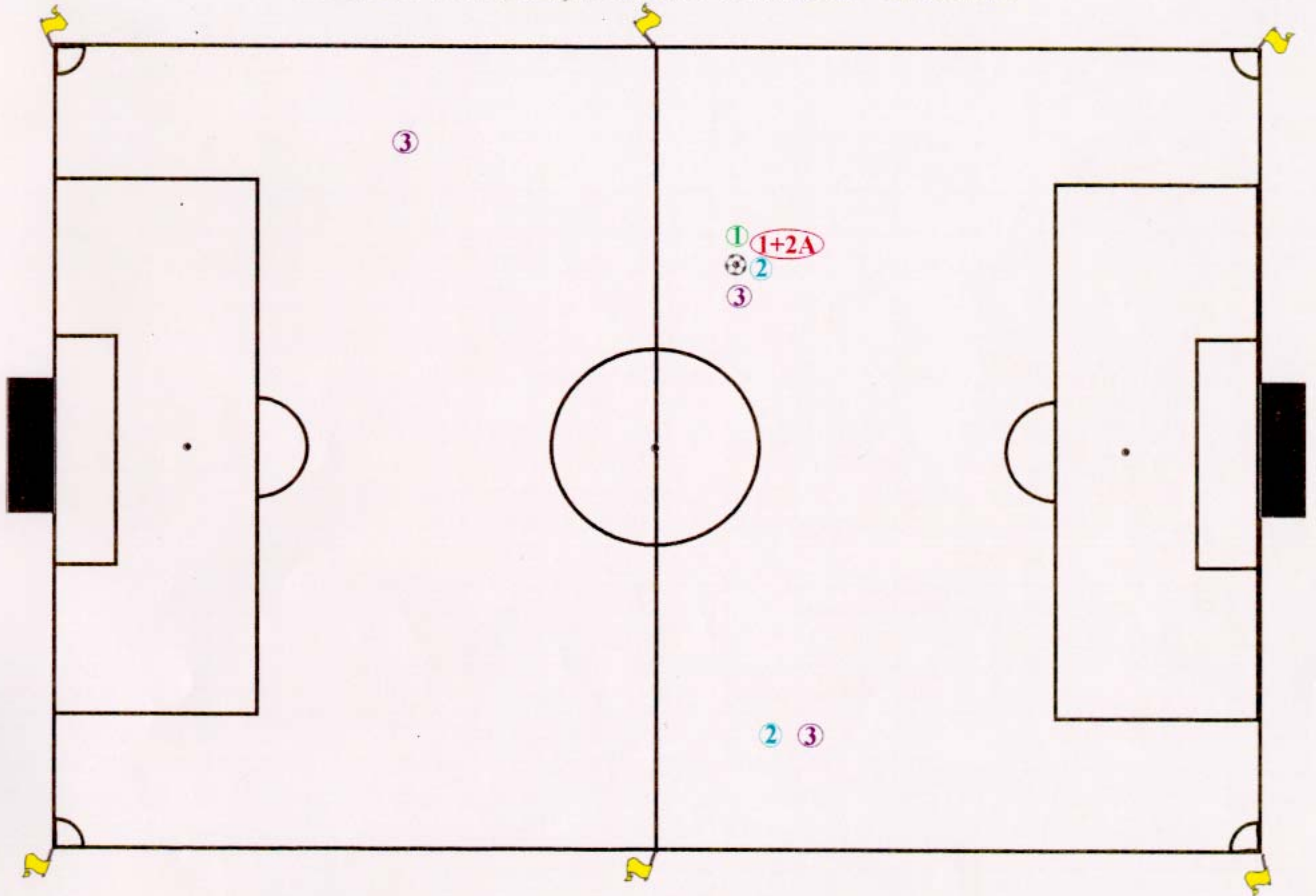
① = 1 Referee   ② = 2 Referees   ③ = 3 Referees   ①+2A = 1 Referee & 2 Assistant Referees

## CORNER-KICK, RIGHT SIDE



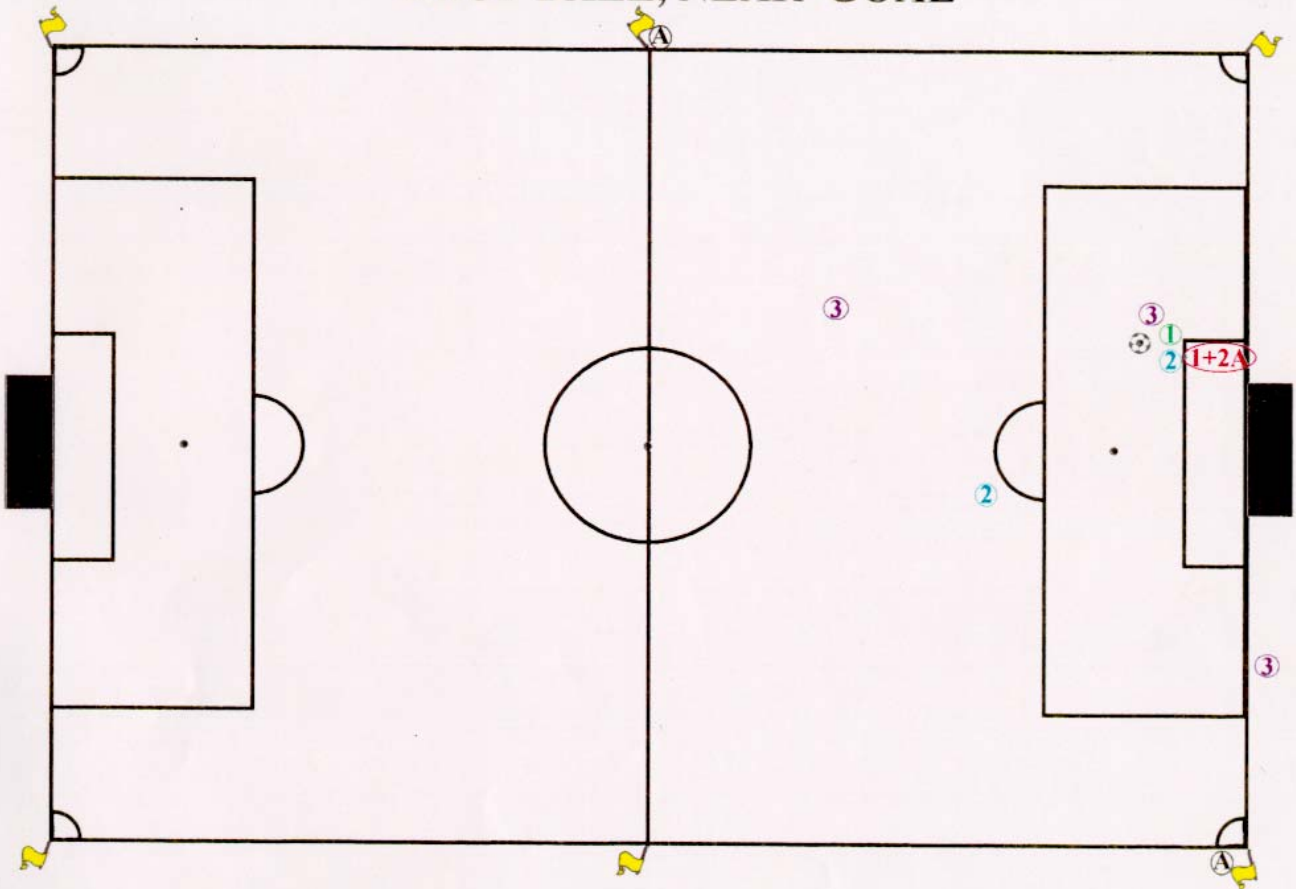
① = 1 Referee   ② = 2 Referees   ③ = 3 Referees   ①+2A = 1 Referee & 2 Assistant Referees

## DROP BALL, AWAY FROM GOAL



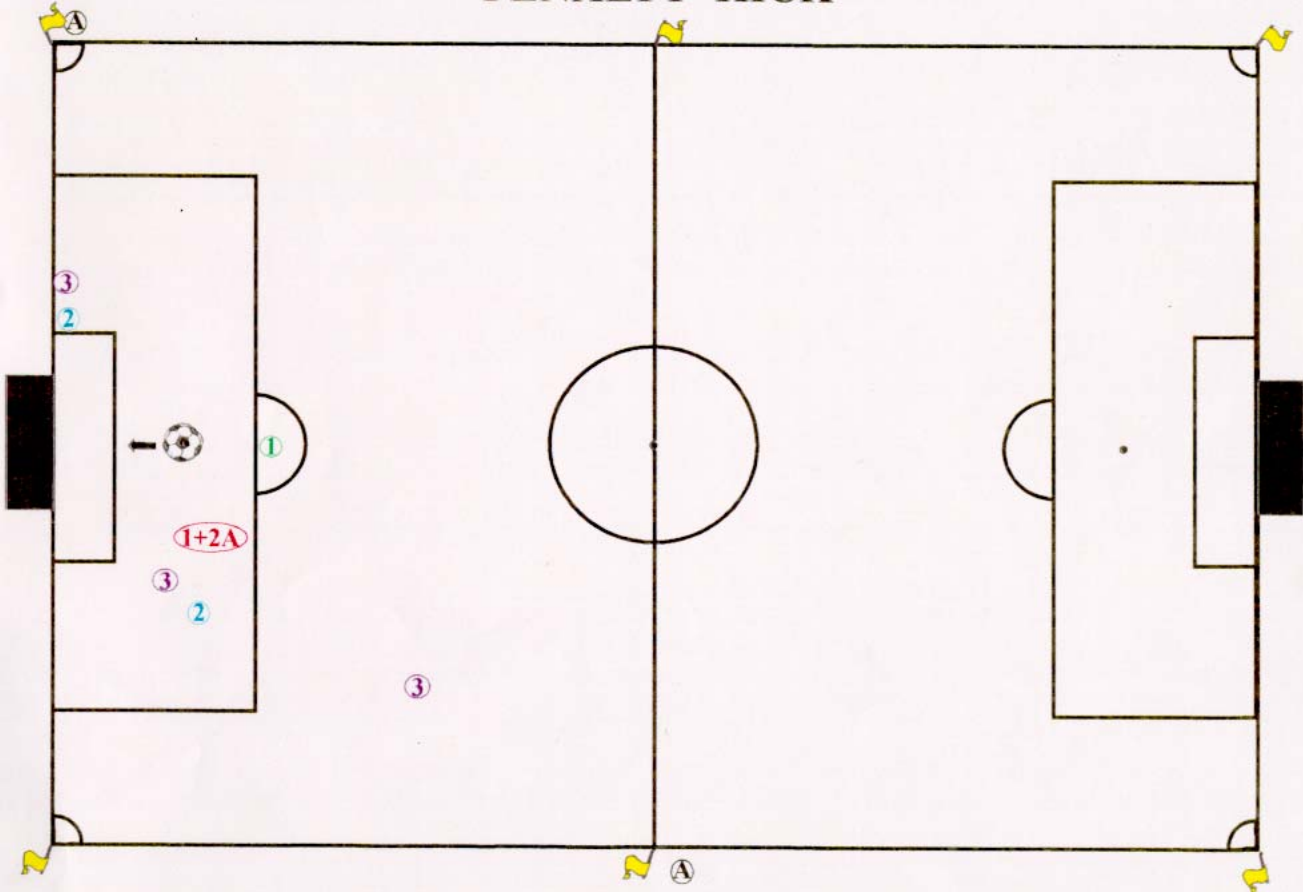
① = 1 Referee ② = 2 Referees ③ = 3 Referees ①+2A = 1 Referee & 2 Assistant Referees

## DROP BALL, NEAR GOAL



① = 1 Referee   ② = 2 Referees   ③ = 3 Referees   (1+2A) = 1 Referee & 2 Assistant Referees

# PENALTY KICK



① = 1 Referee   ② = 2 Referees   ③ = 3 Referees   ①+2A = 1 Referee & 2 Assistant Referees